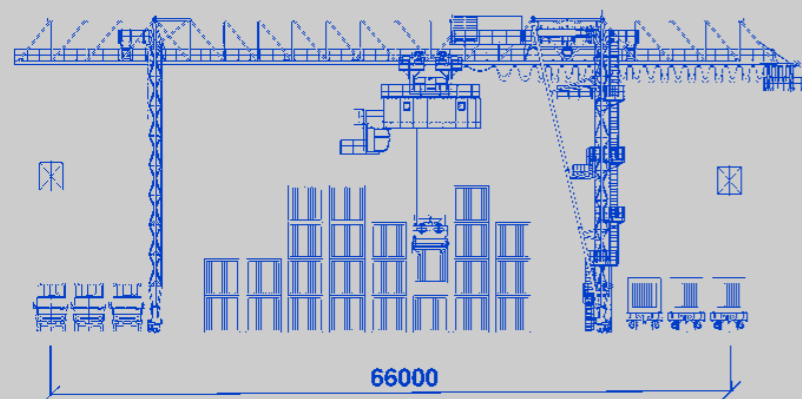
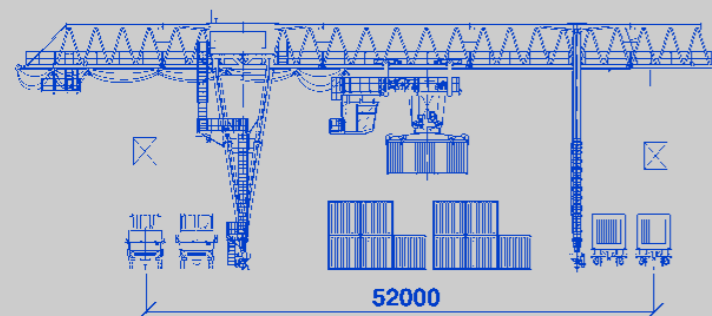
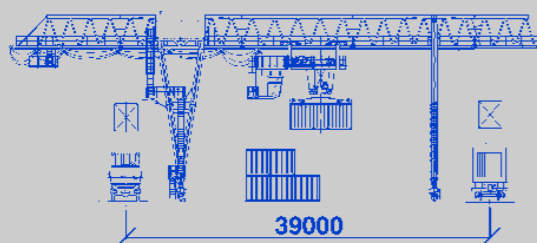


Series of container cranes for different applications



Key technical features
(standard model)

Type of handled containers	20, 30, 40, 45
Span	25 - 42 m
Cantilevers	2x8 - 2x12 m
Lifting height	2+1 - 4+1
Group Classification	A5 - A7
Capacity:	30 containers/hour

Our specialists are ready to offer customized models for special application



CONTAINER RAIL MOUNTED GANTRY CRANES

The cranes can be transported to a Client in big parts by rail, sea, river or road, thus expediting their commission



Container gantry RMG crane with lattice type bridge and required capacity from 35 to 60t. for handling and servicing of 20-, 30-, 40- and 45ft containers.

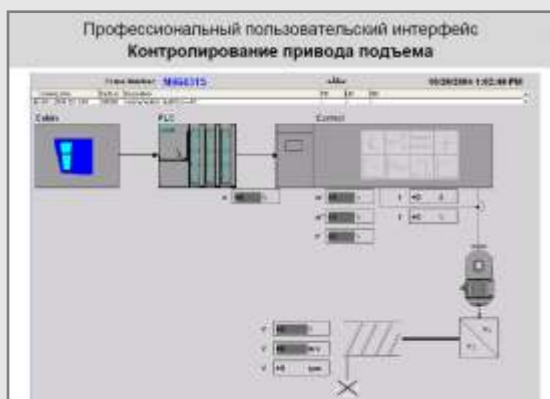
Design features of the crane.

The **bridge and gantry** legs have lattice type constructions that sufficiently reduce the total crane weight and correspondingly the load and costs for crane tracks. They are noted for small surface that makes them wind resistant and provides stability during hurricane winds; snow and ice do not stay on lattice constructions and correspondingly its cleaning is simplified.

The **slewing trolley** with an optimized scheme of mechanisms and units location and use of compact light-weight winch; original system of rope reeving has been developed. Machinery house features housing.

Anti-sway system proven many times during operation has a function of damping and a mechanical prevention a container from sway.

Spreader electric telescopic.



Bogie is fitted with wheel aligning unit during operation. Crane travel gear units are synchronized.

Crane management system- on the basis of the programmable logic controller (PLC) provide crane control and diagnostics with indication on a display the actual conditions and meanings of the crane operating phases and also the information concerning the maintenance order of specific units and details. The encoder block controls the drives speed providing the preciseness of container positioning. Data communication via digital signals by Profibus.

Modem for remote diagnostics of crane operating parameters.

The **cabin** has good visibility and comfort conditions for crane driver operation.

During the crane engineering and fabrication we use our long-term experience and know-how in manufacturing of supporting structures.

Operating advantages:

Smooth working motions due to use of frequency control system for all the drives, with extended operating life of gear boxes, bearings, steel structures etc.

Low power consumption maintaining high productivity. Energy regeneration during crane braking and container lowering.

Reliable crane operation at low temperatures up to -45°C and operating status in the off mode even at lower temperatures up to - 60°C.

All-round, convenient serviceability.

Qualitative anti-corrosion coating.

Cranes can be used in handling of piece-goods, nonstandard cargoes and metal by means of hook, traverse etc.